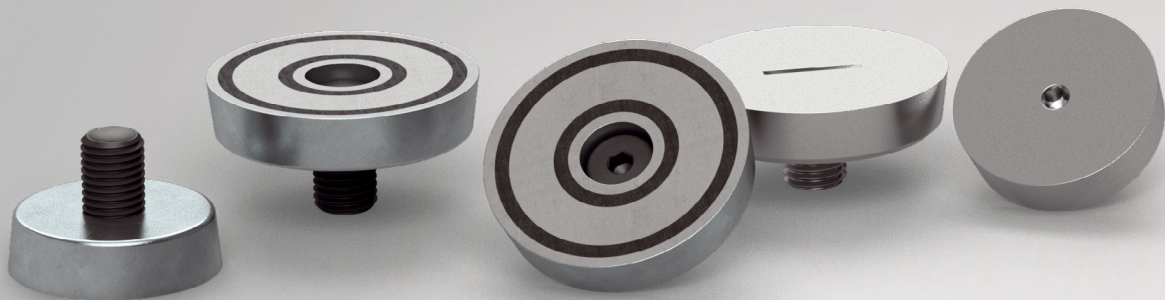


Magnetic fixation



Our products from the division BUILDING SOLUTIONS

SERVICES

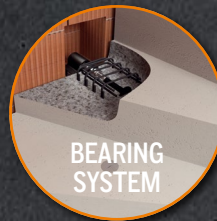
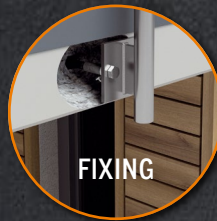
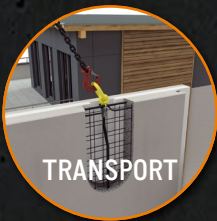
- » On-site tests -> we ensure that your requirements are properly covered by our planning.
- » Test reports -> for your safety and documentation.
- » Trainings -> the knowledge of your employees from planning and production is enhanced by our experts on site, online or via webinar.
- » Planning support -> latest design software, planning documents, CAD data and much more can be downloaded any time from www.philipp-group.de.

HIGH DEMANDS ON PRODUCT SAFETY AND PRACTICALITY

- » Close cooperation with notified bodies and - if necessary - approval of our solutions.

TECHNICAL DEPARTMENT

- » Our expert-team will support you at any time during your planning phase with detailed advice.

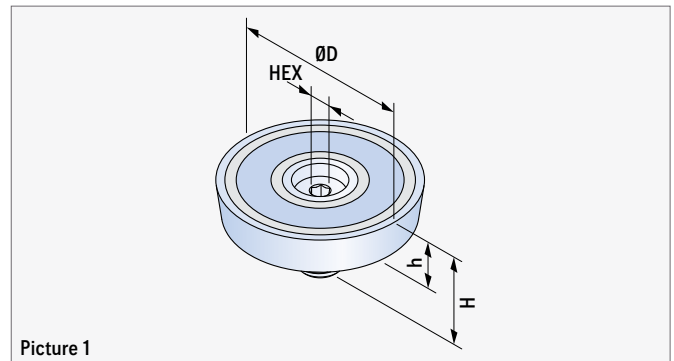


GENERAL PRODUCT INFORMATION

MAGNETIC FIXATION

The Magnetic fixation is fixed to the steel formwork with a screwed-on transport anchor. Here, a correction of the position on the formwork is possible at any time. In order to avoid a change of the position of the transport anchor during concreting, it may be necessary, depending on the length of the anchor, to fix it additionally to the reinforcement of the concrete element.

After the demoulding, the Magnetic fixation can be quickly and easily removed with an Allen key (see table 1). In order to achieve the optimum adhesive of the magnetic recess former the adhesive surface of the recess former and the steel formwork shall be cleaned after use.



Picture 1

TABLE 1: MAGNETIC FIXATION

Ref. no.	Type RD/M	ØD (mm)	H (mm)	h (mm)	HEX (mm)	Adhesive strength (kg)
Version with adhesive strength 105 kg (type R/G 105)						
72MAX12SI	12	54	31	15	8	105
72MAX16SI	16	54	35	15	8	105
72MAX20SI	20	54	35	15	8	105
72MAX24SI	24	54	35	15	8	105
72MAX30SI	30	54	35	15	8	105
72MAX36SI	36	54	35	15	8	105
Version with adhesive strength 190 kg (type R/G 190)						
72MAX12SGI	12	69	31	15	8	190
72MAX16SGI	16	69	35	15	8	190
72MAX20SGI	20	69	35	15	8	190
72MAX24SGI	24	69	35	15	8	190
72MAX30SGI	30	69	35	15	8	190
72MAX36SGI	36	69	35	15	8	190



FURTHER INFORMATION

HANDLING!

Improper handling may result in skin bruises and haematomas. Due to the high impact speeds, parts of the magnet can splinter and cause injuries. Magnets do not belong in children's hands. Also swallowing of the magnets can cause serious medical problems. Persons with pacemakers are advised to keep a certain safety distance to strong magnets. Also direct contact with magnetic materials can lead to allergic reactions (e.g. against ceramic and metallic materials as well as zinc, nickel or plastics).

TEMPERATURE!

Please note that the magnets have a maximum operating temperature of 80 °C. At temperatures above 80 °C, they may permanently lose some of their adhesive force.

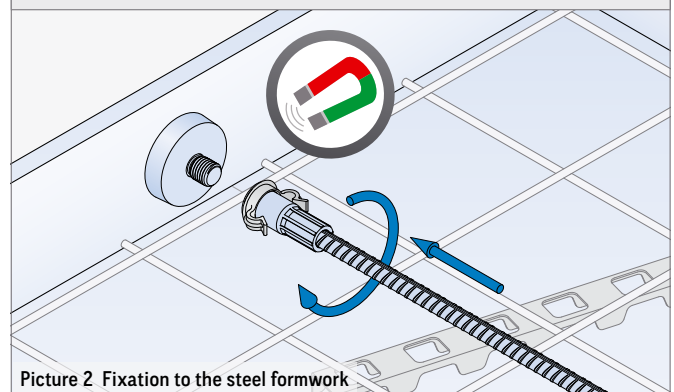
EFFECT!

Please notice that magnetic fields can delete data media such as hard disks, cards with magnetic stripes etc. Electronic and mechanic components such as pacemaker, watches, counters, compasses, displays can be influenced or destroyed. Therefore, keep a distance of at least one metre to these objects.



NOTE ON CONCRETING

If concrete is poured over the magnetically fixed transport anchor, the magnetic recess former on the formwork may be displaced. To avoid this, the area of the anchor must be skipped during concreting.



Picture 2 Fixation to the steel formwork

RESPONSIBILITY!

The magnets are coated to protect them. This coat can be removed during normal use. Splintering of the coating is possible when magnets collide. But this does not affect the performance of the magnets and is no reason for complaint. Mechanical influences such as welding or grinding must be avoided in all cases.

SEALING CAP (STAINLESS STEEL)

The Sealing cap made of stainless steel is a visually attractive and high-quality solution to close the recesses entirely (picture 4). It is available with a slot or hexagon socket in the visible surface when installed.



ATTRACTIVE CLOSING

Sealing caps are used exclusively as visual attractive closing of the recesses. In order to avoid damage to the concrete element (e.g. spalling due to frost), the user shall ensure that the Sealing caps are protected against moisture penetration.

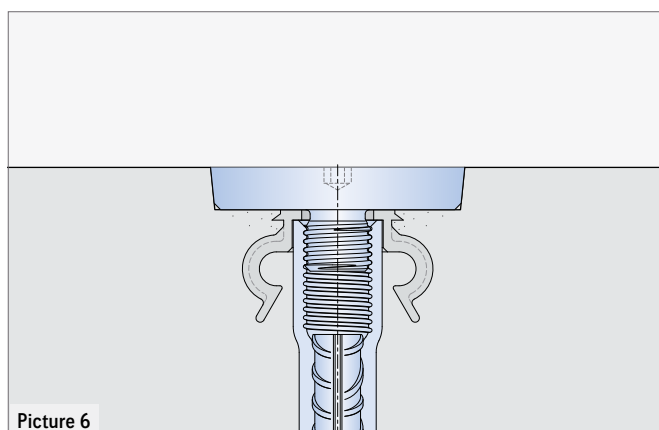
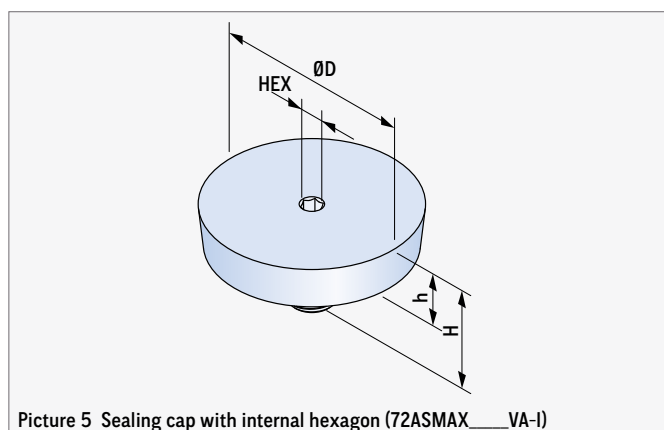
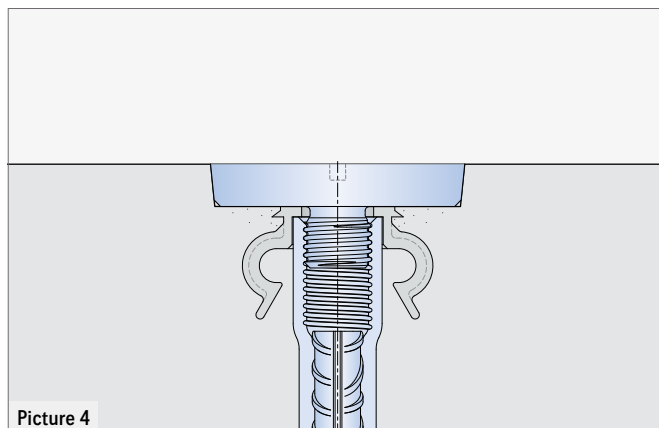
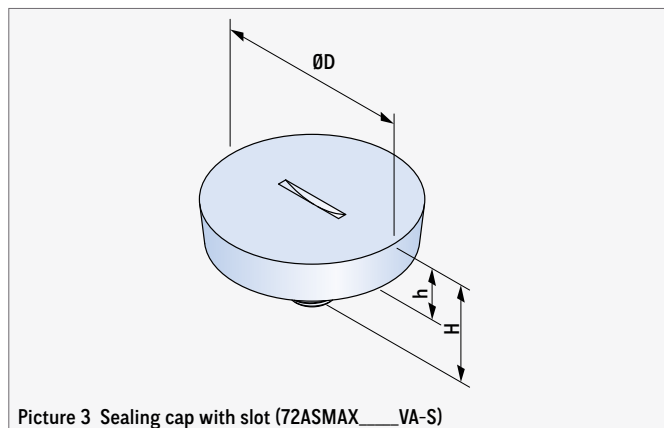


TABLE 3: SEALING CAP STAINLESS STEEL

Ref. no.		Type RD/M	ØD (mm)	H (mm)	h (mm)	HEX (mm)
with slot	with internal hexagon					
for Magnetic fixation type R/G 105						
72ASMAX12105VA-S	72ASMAX12105VA-I	12	54	30	15	6
72ASMAX16105VA-S	72ASMAX16105VA-I	16	54	30	15	6
72ASMAX20105VA-S	72ASMAX20105VA-I	20	54	30	15	6
72ASMAX24105VA-S	72ASMAX24105VA-I	24	54	35	15	6
72ASMAX30105VA-S	72ASMAX30105VA-I	30	54	35	15	6
72ASMAX36105VA-S	72ASMAX36105VA-I	36	54	35	15	6
for Magnetic fixation type R/G 190						
72ASMAX12190VA-S	72ASMAX12190VA-I	12	69	30	15	6
72ASMAX16190VA-S	72ASMAX16190VA-I	16	69	30	15	6
72ASMAX20190VA-S	72ASMAX20190VA-I	20	69	35	15	6
72ASMAX24190VA-S	72ASMAX24190VA-I	24	69	35	15	6
72ASMAX30190VA-S	72ASMAX30190VA-I	30	69	40	15	6
72ASMAX36190VA-S	72ASMAX36190VA-I	36	69	40	15	6

HEADQUARTERS

Lilienthalstraße 7-9
63741 Aschaffenburg
☎ +49 6021 40 27-0
✉ info@philipp-gruppe.de

PRODUCTION AND LOGISTICS

Hauptstraße 204
63814 Mainaschaff
☎ +49 6021 40 27-0
✉ info@philipp-gruppe.de

OFFICE COSWIG

Roßblauer Straße 70
06869 Coswig / Anhalt
☎ +49 34903 6 94-0
✉ info@philipp-gruppe.de

OFFICE NEUSS

Sperberweg 37
41468 Neuss
☎ +49 2131 3 59 18-0
✉ info@philipp-gruppe.de

OFFICE TANNHEIM

Robert-Bosch-Weg 12
88459 Tannheim / Allgäu
☎ +49 8395 8 13 35-0
✉ info@philipp-gruppe.de

PHILIPP VERTRIEBS GMBH

Pfaffing 36
5760 Saalfelden / Salzburg
☎ +43 6582 7 04 01
✉ info@philipp-gruppe.at

PHILIPP POLSKA SPÓŁKA Z O.O.

ul. Wojska Polskiego 1
47-220 Kędzierzyn-Koźle / Opole
☎ +48 503 353 816
✉ polska@philipp-gruppe.de



HEADQUARTERS Aschaffenburg



Visit us!

www.philipp-gruppe.com